

# ECLIPSE

PROFESSIONAL TOOLS



## Machinery Workshop Hand Tools THE TOOLS TO TRUST



\*PRICES ARE VALID WHILE STOCKS LAST. \*EXCLUSIVE TO MATUS ACCOUNT HOLDERS. \*PROMO IS EXCLUSIVE OF VAT \*TERMS AND CONDITIONS APPLY. \*E&OE



### JOHANNESBURG (HO)

Number 1 Randport  
Industrial Park, 1 Suzuka Road,  
Gosforth Park, Germiston  
T 011 681 9440 (Admin)  
T 011 681 9100 (Sales)  
E info@matus.co.za  
W www.matus.co.za

### CAPE TOWN

11 Grenville Ave,  
Epping Industria 1,  
Cape Town  
T 021 486 2200  
E info@matus.co.za

### DURBAN

Physical Address  
Unit B, Campbell Street,  
Northfield Business Park  
Glen Anil, 4051  
T 031 580 3400  
E info@matus.co.za

### PORT ELIZABETH

Physical Address  
118 Burman Road,  
Deal Party, Port Elizabeth  
T 041 486 1345/59  
E info@matus.co.za

**MATUS**  
Hard Working Brands





# THE TOOLS TO TRUST

Eclipse was founded in the City of Sheffield which is famous for the production of steel, cutlery and hand tools and continues to be our home over 260 years later.

In 1889, James Neill formed his own company adopting the Eclipse brand name. Initially manufacturing steel, he moved on to manufacture machine knives, woodworking tools and hacksaw blades, for which the company is best known.

James Neill acquired the Spear & Jackson group, in 1885 subsequently renaming the company as Spear & Jackson.

Whilst the Spear & Jackson brand is probably best known in the UK for our unparalleled range of quality hand, garden and contractors tools, Eclipse is recognised worldwide as the professionals' choice for metal cutting and machinery workshop hand tools.

As you would expect with over 100 years of experience, the Eclipse product range has widened to accommodate natural product extensions, such as holesaws, jigsaw blades, reciprocating blades, locking jaw pliers, bolt and cable cutters, aviation snips, riveters, vices, heavy duty woodworking and metalworking clamps, engineers hand tools, plumbing tools, adjustable wrenches, hose clips and torque control tools. All designed and manufactured to the highest possible quality standards.

We offer excellent customer service in the UK and export markets via a global network of representative's and distributors in over 80 countries.

Spear & Jackson UK is a division of the

Spear & Jackson Group, which includes brands such as:

- Moore & Wright
- Eclipse Magnetics
- Bowers
- Baty
- Robert Sorby

The Spear & Jackson Group have operating companies in the UK, North America, France, China, Australia and New Zealand.

Throughout the development of the Eclipse brand, the company has continued to innovate and embrace new ideas and applications, whilst combining new and traditional materials to create reliable, high quality, functional tools at affordable prices, creating our enviable brand reputation as **the tools to trust**.

## Eclipse Quality Guarantee

\*Eclipse Professional Tools are warranted to be free from defects in material and workmanship for the life of the tool under normal conditions of use, excluding damage arising from misuse or alteration. Your statutory rights are not affected.



## The Official Mark of Quality

Dedication to quality has earned official accreditation of the BSEN ISO 9001:2015 Quality Assurance Certificate for the general manufacture of all our hand tools. This represents another important milestone in NEILL TOOLS history, since this is internationally recognised as a mark of quality. In addition, we guarantee all our tools and products against defective workmanship and materials so you can be sure of first-class performance.

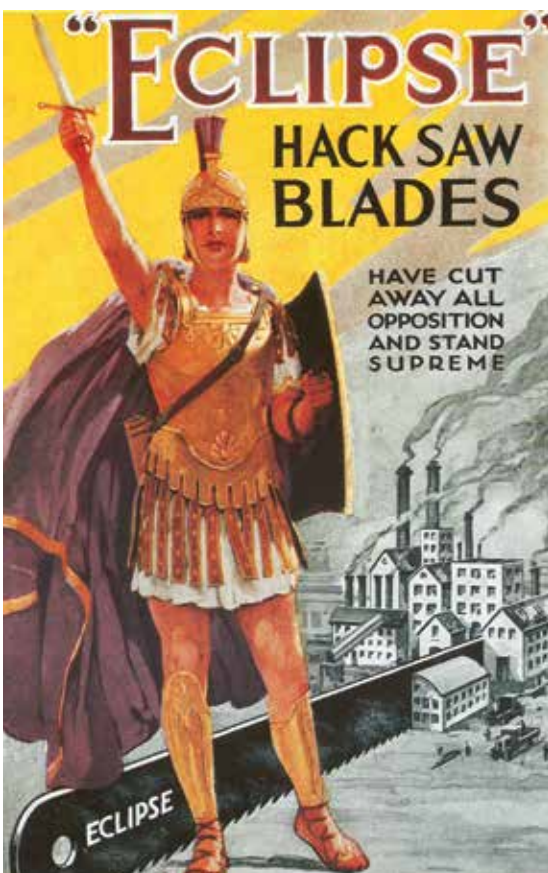


Cert No. FM642368

## QUICK FACTS



- UK & Export Head office on 10 acre site based in Sheffield, England
- 97,000 ft<sup>2</sup> warehouse
- Over 3500 tools distributed to both our export and UK customers every week
- Products stocked by a large network of major DIY retailers and merchants





## Eclipse Metal Cutting

**Eclipse is the number one name in metal cutting.**

Our hacksaw blades are manufactured to the highest quality standards and deliver unparalleled cutting performance. A comprehensive range of saw frames complement the hacksaw blades to offer the professional a complete metal cutting solution.

# Metal Cutting Hand Hacksaw Blades

High quality flexible shatterproof silicon hand hacksaw blades suitable for occasional DIY use.

## Flexible Silicon Shatterproof

A virtually unbreakable blade suitable for DIY use. Manufactured from low alloy silicon steel, this blade is ideal for general purpose sawing of mild steel, brass, aluminium, copper and other soft metals.

- General Purpose
- Shatterproof Blade



Part No.	Blade Size (mm)	Blade Size (")	Teeth per 25mm	Pack Size	Pack Weight (kg)
AM44L*	300 x 12.5 x 0.63	12 x ½ x 0.025	14	100	1.80
AM44LPB*	300 x 12.5 x 0.63	12 x ½ x 0.025	14	100	1.90
AM45W	300 x 12.5 x 0.63	12 x ½ x 0.025	18	100	1.80
AM45WPB*	300 x 12.5 x 0.63	12 x ½ x 0.025	18	100	1.90
AM46B	300 x 12.5 x 0.63	12 x ½ x 0.025	24	100	1.80
AM46BPB*	300 x 12.5 x 0.63	12 x ½ x 0.025	24	100	1.90
AM47X	300 x 12.5 x 0.63	12 x ½ x 0.025	32	100	1.80
AM47XPB*	300 x 12.5 x 0.63	12 x ½ x 0.025	32	100	1.90

\*Made to order. MOQ applies. Details available on request.



## Flexible Silicon Shatterproof Blades Retail Packs

Part No.	Blade Size (mm)	Blade Size (")	Teeth per 25mm	Blades in Pack	Pack Size
71-224R	300 x 12.5 x 0.63	12 x ½ x 0.025	24	5	10
AM47XTUBE*	300 x 12.5 x 0.63	12 x ½ x 0.025	32	10	10

## Packaging Options

Our boxed (100) Hacksaw Blades are available in either traditional cardboard boxes, or in informative tamper proof plastic boxes suitable for retail hanging and easy blade selection.



Manufactured entirely from top quality M2 High Speed Steel and hardened throughout, All Hard blades are capable of cutting the most difficult materials with great accuracy and combine consistent high performance with long life.

All Hard HSS Blades						
Part No.	Blade Size (mm)	Blade Size (inches)	Teeth per 25mm	PIN dia. (mm)	Pack Size	Pack Weight (kg)
AE144N*	300 x 16 x 0.80	12 x 5/8 x 0.032	14	5	50	1.60
AE145L	300 x 16 x 0.80	12 x 5/8 x 0.032	18	5	50	1.60
AE146W	300 x 16 x 0.80	12 x 5/8 x 0.032	24	5	50	1.60
AE203V	300 x 25 x 1.25	12 x 1 x 0.050	10	8.2	10	0.79
AE204R	300 x 25 x 1.25	12 x 1 x 0.050	14	8.2	10	0.79
AE222B	350 x 25 x 1.25	14 x 1 x 0.050	6	8.2	10	0.94
AE223R	350 x 25 x 1.25	14 x 1 x 0.050	10	8.2	10	0.94
AE224H	350 x 25 x 1.25	14 x 1 x 0.050	14	8.2	10	0.94
AE342E	350 x 32 x 1.60	14 x 1 1/4 x 0.062	6	8.2	10	1.50
AE343V	350 x 32 x 1.60	14 x 1 1/4 x 0.062	10	8.2	10	1.50
AE344R	350 x 32 x 1.60	14 x 1 1/4 x 0.062	14	8.2	10	1.50
AE452W*	350 x 38 x 2.00	14 x 1 1/2 x 0.075	6	8.2	10	1.06
AE243H	400 x 25 x 1.25	16 x 1 x 0.050	10	8.2	10	1.06
AE244M	400 x 25 x 1.25	16 x 1 x 0.050	14	8.2	10	1.06
AE352X	400 x 32 x 1.60	16 x 1 1/4 x 0.062	6	8.2	10	1.72
AE353K	400 x 32 x 1.60	16 x 1 1/4 x 0.062	10	8.2	10	1.72
AE354C	400 x 32 x 1.60	16 x 1 1/4 x 0.062	14	8.2	10	1.72
AE462G	400 x 38 x 2.00	16 x 1 1/2 x 0.075	6	8.2	10	2.50
AE263M*	425 x 25 x 1.25	17 x 1 x 0.050	10	8.2	50	1.12
AE362V*	425 x 25 x 1.25	17 x 1 1/4 x 0.062	6	8.2	50	1.80
AE363R	425 x 25 x 1.25	17 x 1 1/4 x 0.062	10	8.2	50	1.80
AE372K	450 x 32 x 1.60	18 x 1 1/4 x 0.062	6	10.2	10	1.88
AE373C	450 x 32 x 1.60	18 x 1 1/4 x 0.062	10	10.2	10	1.88
AE472B	450 x 38 x 2.00	18 x 1 1/2 x 0.075	6	10.2	10	2.68
AE512M	450 x 45 x 2.25	18 x 1 3/4 x 0.088	6	10.2	10	3.90
AE522A*	475 x 45 x 2.25	19 x 1 3/4 x 0.088	6	10.2	10	3.95
AE482E	500 x 38 x 2.00	20 x 1 1/2 x 0.075	6	10.2	10	3.00
AE492X	525 x 38 x 2.00	21 x 1 1/2 x 0.075	6	10.2	10	3.30
AE493K	525 x 38 x 2.00	21 x 1 1/2 x 0.075	10	10.2	10	3.30
AE541A*	525 x 45 x 2.25	21 x 1 3/4 x 0.088	4	10.2	10	4.30
AE542D	525 x 45 x 2.25	21 x 1 3/4 x 0.088	6	10.2	10	4.30
AE622C	550 x 50 x 2.50	22 x 2 x 0.100	6	12.5	10	5.60
AE632H*	575 x 50 x 2.50	23 x 2 x 0.100	6	12.5	10	5.93
AE562P	600 x 45 x 2.25	24 x 1 3/4 x 0.088	6	12.5	10	4.90
AE641C	600 x 50 x 2.50	24 x 2 x 0.100	4	12.5	10	6.40
AE642J	600 x 50 x 2.50	24 x 2 x 0.100	6	12.5	10	6.40
AE651H*	650 x 50 x 2.50	24 x 2 x 0.100	4	12.5	10	6.96
AE652M	650 x 50 x 2.50	24 x 2 x 0.100	6	12.5	10	6.96
AE662A	700 x 50 x 2.50	28 x 2 x 0.100	6	12.5	10	7.35
AE691F*	750 x 63 x 2.50	30 x 2 1/2 x 0.100	4	12.5	10	10.08

\* Made to order. MOQ applies. Details available on request.



# Metal Cutting Power Hacksaw Blades

Manufactured from high speed steel, electron beam welded to a spring steel back, bimetal blades are virtually unbreakable, safe and able to withstand heavy feed pressures, giving economical, high cutting rates. They will cut through most types of metal including alloy and stainless steels.

## All Hard HSS - Suitable for KASTO Hacksawing Machines

Part No.	Blade Size (mm)	Blade Size (")	Teeth per 25mm	PIN dia. mm	Pack Size	Pack Weight (kg)
AE972G*	450 x 38 x 2.00	18 x 1½ x 0.075	10	8.5	10	2.80
AE983X*	575 x 50 x 2.50	23 x 2 x 0.100	6	10.5	10	5.96

\* Made to order. MOQ applies. Details available on request.

## Bimetal High Speed Steel Blades

Part No.	Blade Size (mm)	Blade Size (")	Teeth per 25mm	PIN dia. mm	Pack Size	Pack Weight (kg)
AA203K	300 x 25 x 1.25	12 x 1 x 0.050	10	8.2	10	1.03
AA204C	300 x 25 x 1.25	12 x 1 x 0.050	14	8.2	10	1.03
AA223C	350 x 25 x 1.25	14 x 1 x 0.050	10	8.2	10	1.16
AA224J	350 x 25 x 1.25	14 x 1 x 0.050	14	8.2	10	1.16
AA342X	350 x 32 x 1.60	14 x 1¼ x 0.062	6	8.2	10	1.56
AA343K	350 x 32 x 1.60	14 x 1¼ x 0.062	10	8.2	10	1.56
AA352V	400 x 32 x 1.60	16 x 1¼ x 0.062	6	8.2	10	1.78
AA353R	400 x 32 x 1.60	16 x 1¼ x 0.062	10	8.2	10	1.78
AA462B*	400 x 38 x 2.00	16 x 1¼ x 0.075	6	8.2	10	2.68
AA373H	450 x 32 x 1.60	18 x 1¼ x 0.062	10	10.2	10	1.96
AA472E*	450 x 38 x 2.00	18 x 1¼ x 0.075	6	10.2	10	3.02
AA492V*	525 x 38 x 2.00	21 x 1½ x 0.075	6	10.2	10	3.52

\* Made to order. MOQ applies. Details available on request.

## Power Blade Tooth Pitch and Cutting Speed Selection Guide

Workpiece Material	Speed Strokes/Min	mm inch	<13	<13	25	50	75	100	125
			<½	<½	1	2	3	4	5
Magnesium	140-160		14						
Aluminium	100-160			10					
Free Machining Low Carbon Steel	140-160			6			4		
Brass	120-150		14						
Copper	90-120			10					
Mild Steel	110-150				6				
Low & Medium Carbon Steels	90-160						4		
Structural Steels	100-125						4		
High Carbon Steels	50-100		14						
Bronze	100-120								
Tool Steels	60-80			10					
Die Steels	50-75								
Alloy Steels	45-95								
Copper Alloys	70-120				6				
Malleable Cast Irons	50-90								
Titanium Alloys	50-70						4		
Grey Cast Irons	70-100								
High Temperature Alloys (Inconel, Nimonic, Hastelloy, Incoloy, Waspaloy)	35-75		10						
Nickel Alloys (Monel, Duranickel)	30-60			6					
							4		

Blade selection based on type of material being cut. Also for thinner workpieces select the faster blade speed and higher TPI and for thicker workpieces select the slower speed and lower TPI.







# Metal Cutting

## Small Saw Blades

### Small Saw Blades Range

A comprehensive range of blades for use in small saw frames, for cutting a wide range of materials including metals, wood and composites in various profiles.

#### Small Saw Blades

Part No.	Description	Length	Teeth per 25mm	Blades in Pack
71-132R	Junior blades	150mm (6")	32	10
71-114R	Junior-wood	150mm (6")	14	10
71-230R	Padsaw blades			
	- wood	254mm (10")	10	1
	- metal	203mm (8")	24	1
71-CP7R	Coping Saw blades	165mm (6½")	14	10
71-CP24R	Coping Saw blades	165mm (6½")	24	10
71-FS5R	Fretsaw blades	125mm (5")	18	10
FS32	Fretsaw blades	125mm (5")	32	100
FS22	Fretsaw blades	125mm (5")	22	100
FS18	Fretsaw blades	125mm (5")	18	100
FS16	Fretsaw blades	125mm (5")	16	100
PS80	Piercing Saw Blades	125mm (5")	80	100
PS60	Piercing Saw Blades	125mm (5")	60	100
PS52	Piercing Saw Blades	125mm (5")	52	100
PS44	Piercing Saw Blades	125mm (5")	44	100
PS32	Piercing Saw Blades	125mm (5")	32	100
73-66SR	GP saw spare blade	375mm (15¾")	10	1





# Metal Cutting Saw Frames

## Saw Frames Range

A choice of hacksaw frames designed for the professional user for cutting a wide range of metals and other materials, including the 70-24TR high tension saw frame with a quick blade change mechanism.





A choice of hacksaw frames designed for the professional user for cutting a wide range of metals and other materials, including the 70-24TR high tension saw frame with a quick blade change mechanism.

### 70-24TR High Tension Professional Saw Frame

Aluminium frame is lightweight, strong and durable resulting in less fatigue during prolonged use. It can maintain blade tension up to 200 Kg force to ensure accurate and straight cutting performance. Features a quick blade change mechanism to save time in the workshop and an alternative 45° blade mounting for flush cutting. It is supplied with an Eclipse shatterproof bimetal 24TPI blade.



Part No.	Length	Height	Pack Qty.	Box Weight (kg)
70-24TR	410mm (16")	150mm (6")	6	4.0

### 70-20TR/20TND Saw Frames

"The original" 70-20TR. Strong, tubular frame complete with a die cast handle for greater comfort and control when sawing. Maintains optimum blade tension to ensure accurate and straight cutting performance. It is supplied with an Eclipse shatterproof bimetal 24TPI blade, suitable for cutting most metals and plastics. Available in packs of 5's or 20's.



Part No.	Description	Length	Height	Pack Qty	Box Weight
70-20TR	Prof. Hacksaw	465mm (18 <sup>3</sup> / <sub>8</sub> " )	130mm (5")	5	3.85kg
20TND	Prof. Hacksaw	465mm (18 <sup>3</sup> / <sub>8</sub> " )	130mm (5")	20	14.75kg

### 70-22TR Saw Frame

The 70-22TR Hacksaw Frame has a soft-feel handle, powder coated moulded section steel frame. It is supplied with an Eclipse shatterproof bimetal 24TPI blade.



Part No.	Length	Height	Pack Qty.	Box Weight (kg)
70-22TR	400mm (16")	132mm (5.1")	5	3.6

# Metal Cutting Saw Frames

Alternative saw frames offering great value for money suitable for cutting a wide range of metals and other materials.

## 40PG30 Saw Frame

A traditional pistol grip hacksaw with die cast handle and solid frame. It is supplied with an Eclipse shatterproof bimetal 24TPI blade.



Part No.	Length	Height	Pack Qty	Box Weight
40PG30	485mm (19")	120mm (4 <sup>3</sup> / <sub>4</sub> "	5	3.50kg

## 18TND Saw Frame

Lightweight and strong mild steel box section frame with a die cast handle for strong grip. It is supplied with an Eclipse shatterproof bimetal 24TPI blade.



Part No.	Length	Height	Pack Qty	Box Weight
18TND	443mm (17 <sup>3</sup> / <sub>8</sub> "	132mm (5 <sup>1</sup> / <sub>4</sub> "	10	4.4kg

## 16TND Saw Frame

A lightweight, economical hacksaw frame with a strong, box section tubular steel frame and a comfortable and durable cast aluminium handle. In addition, the extra long location pin gives increased security of the tensioning bit. It is supplied with an Eclipse shatterproof bimetal 18TPI blade.



Part No.	Length	Height	Pack Qty	Box Weight
16TND	430mm (16.9")	132mm (5 <sup>1</sup> / <sub>4</sub> "	10	4.4kg

## 70-400R/400ND Saw Frame

Tubular steel frame and comfort grip plastic handle supplied with an Eclipse flexible silicon steel blade.



Part No.	Length	Height	Pack Qty	Box Weight
70-400R	400mm (15 <sup>3</sup> / <sub>4</sub> "	130mm (5")	5	2.5kg
400ND	400mm (15 <sup>3</sup> / <sub>4</sub> "	130mm (5")	20	9.20kg
400NDB*	400mm (15 <sup>3</sup> / <sub>4</sub> "	130mm (5")	20	9.20kg

\* Supplied with an Eclipse shatterproof bimetal 24TPI blade.



## Eclipse Workholding Solutions

A range of vices, clamps and accessories providing workholding solutions for metal and wood working requirements.

# Workholding Solutions

## Vices

### EMVSB Swivel Bases

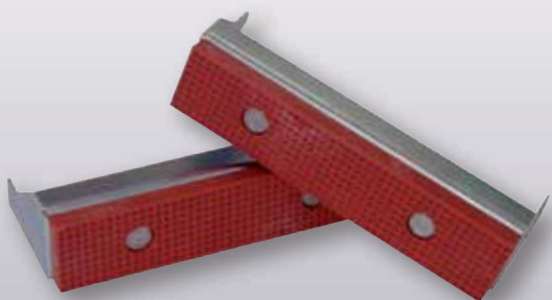
- Includes three mount holes for attaching to a workbench
- For use with Eclipse Mechanics' Vices



Part No.	Size	For use with:	Pack Qty
EMVSB-1	Swivel Base for 75mm (3") Vice	EMV-1	10
EMVSB-3	Swivel Base for 100mm (4") Vice	EMV-3	10
EMVSB-5	Swivel Base for 128mm (5") Vice	EMV-5	10
EMVSB-6	Swivel Base for 150mm (6") Vice	EMV-6	8
EMVSB-8	Swivel Base for 200mm (8") Vice	EMV-8	8

### EFG Fibre Grips

- A range of high quality fibre grips for use with Eclipse Mechanics' Vices.
- Prevents damage to workpieces with soft or polished surfaces.
- Supplied in pairs.



Part No.	Size	For use with	Pack Qty
EFG1	75mm (3")	EMV-1	10
EFG3	100mm (4")	EMV-3	10
EFG5	128mm (5")	EMV-5	10
EFG6	150mm (6")	EMV-6	10
EFG8	200mm (8")	EMV-8	10

### EMV-JPS Spare Jaw plates

- Replacement hardened steel jaw plates with fine knurl grip pattern to fit EMV series vices.
- Supplied as a pair with 4 screws for easy fitting.



Part No.	Description
EMV-1JPS	Spare jaw plates and screws for EMV-1
EMV-3JPS	Spare jaw plates and screws for EMV-3
EMV-5JPS	Spare jaw plates and screws for EMV-5
EMV-6JPS	Spare jaw plates and screws for EMV-6
EMV-8JPS	Spare jaw plates and screws for EMV-8

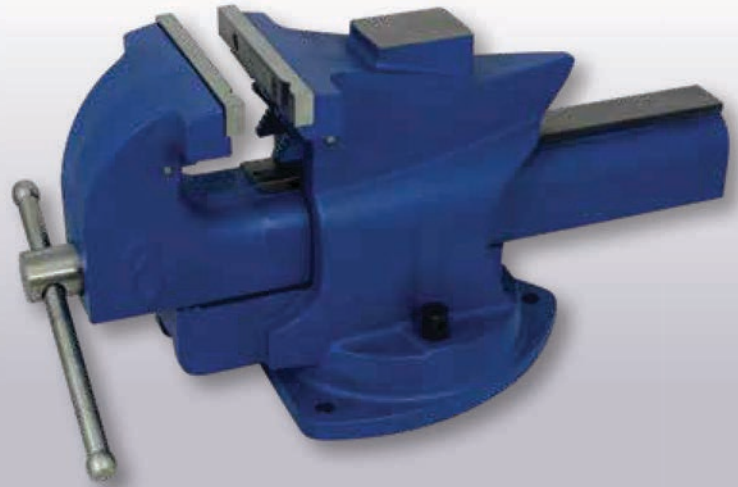
## EQRV Quick Release Mechanics' Vice

**High quality specialist Cast Iron Mechanics' Vices with quick release features and multi-purpose vices for flexible working.**

Strong and durable precision cast iron body with hardened steel jaw plates. Up to 4000kg of clamping force is achievable for medium to heavy duty metalworking and pipe jaws are included for specific pipe work.

It features an effortless quick release lever mechanism that ensures the vice can be opened and closed without using the main screw allowing rapid movement of the slide. This allows for workpieces to be quickly interchanged saving time in the workshop.

It includes a convenient anvil at the rear of the body for beating and hammering workpieces, 360° swivel rotation and a 3 lug heavy duty reinforced base. Available in 4" 5", 6" and 8" Jaw widths

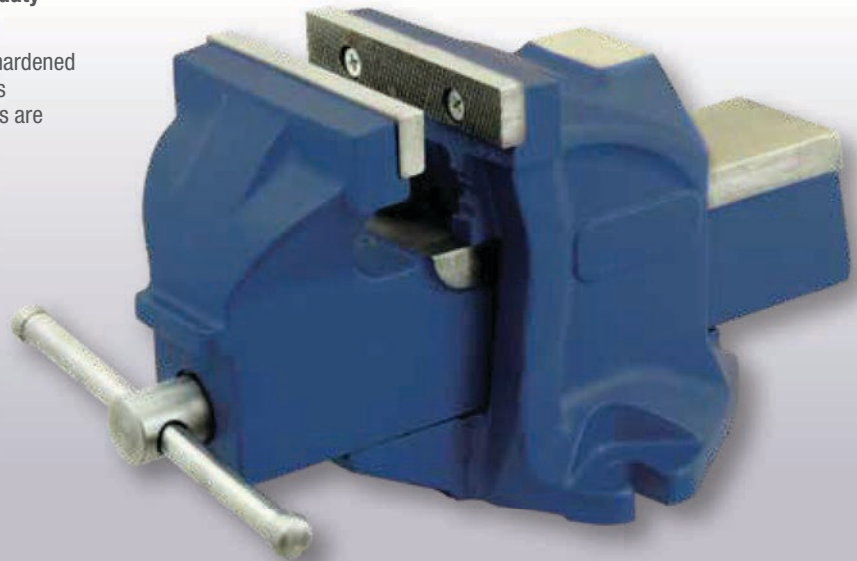


Part No.	Jaw Width	Throat Depth	Opening	Clamping Force (Max)	Net Weight	Qty per Pallet
EQRV-4*	100mm (4")	71mm	152mm	2000kgf	13.1kg	56
EQRV-5	125mm (5")	77mm	178mm	2500kgf	17.8kg	30
EQRV-6	150mm (6")	84mm	203mm	3000kgf	23.0kg	24
EQRV-8	200mm (8")	92mm	254mm	4000kgf	33.0kg	18

## EHV-3 4" Pipe Jaw Workshop Vice

**Compact Cast Iron workshop vice for medium duty working with built in pipe jaws.**

Strong and durable precision cast iron body with hardened steel jaw plates. Up to 1000kg of clamping force is achievable for medium duty working and pipe jaws are included for specific pipe work



Part No.	Jaw Width	Throat Depth	Opening	Clamping Force (Max)	Net Weight	Qty per Pallet
EHV-3	100mm (4")	60mm	100mm	1000Kgf	7.6kg	105



# Workholding Solutions

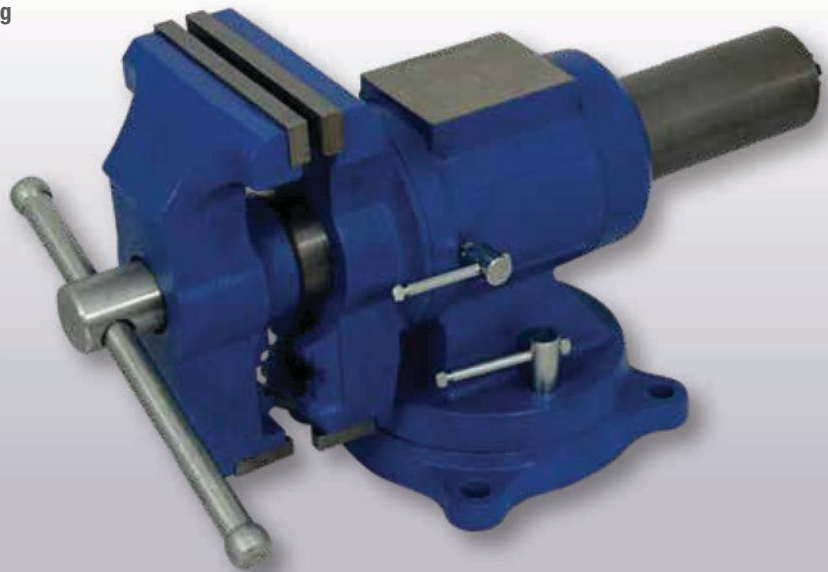
## Vices

### EMPV-5 5" Multi-Purpose Vice

Strong and durable precision cast iron body with hardened steel jaw plates. Up to 3500kg of clamping force is achievable for medium to heavy duty metal and wood working and pipe jaws are included for specific pipe work.

The moving body is capable of rotating 360° and it also features a 360° swivel base for flexible working.

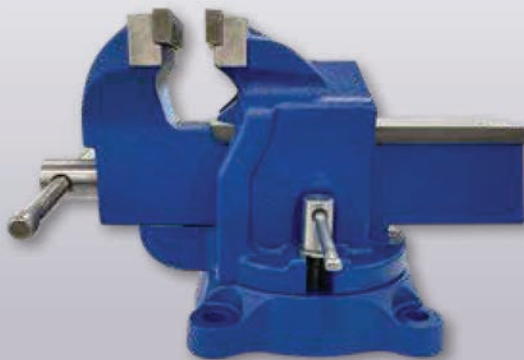
It includes a convenient anvil at the rear of the body for beating and hammering workpieces.



Part No.	Jaw Width	Throat Depth	Opening	Clamping Force (Max)	Net Weight	Qty per Pallet
EMPV-5	125mm (5")	67mm	125mm	3500kgf	15.0kg	40

### EBV-4 4" Bench Vice with 360° Swivel Base

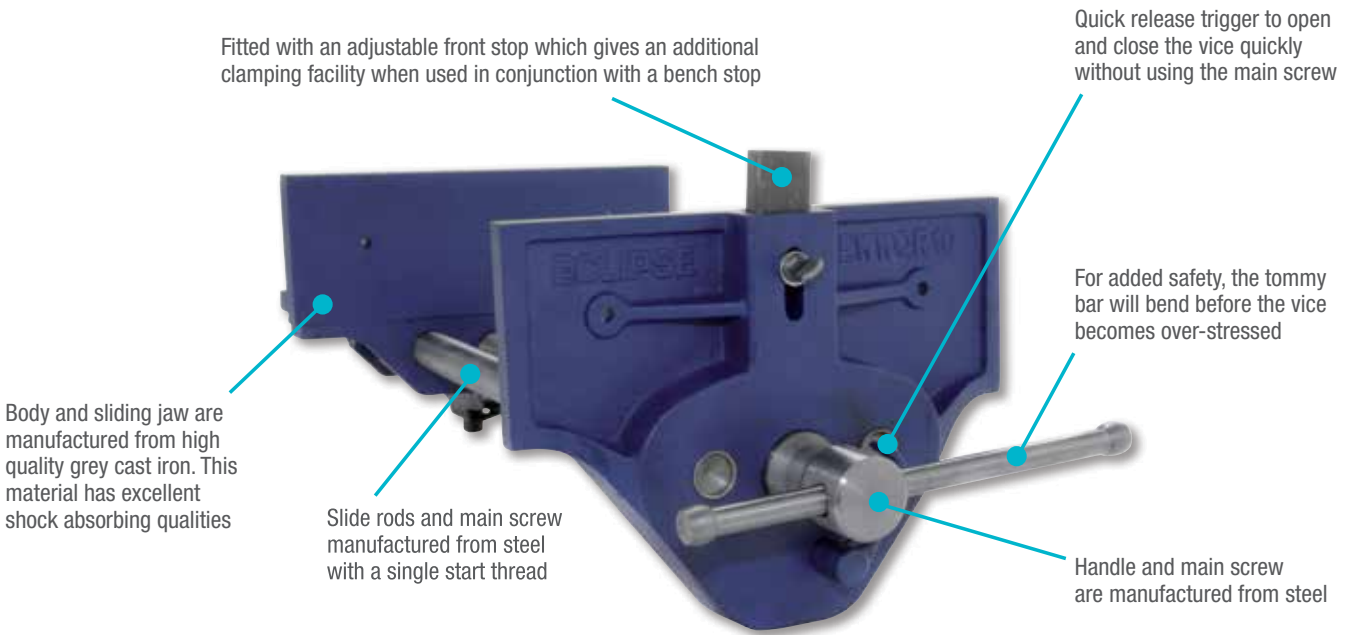
- Body and sliding jaw manufactured from high quality cast iron to provide excellent shock absorption
- Tommy bar will bend before the vice becomes overstressed
- The slide is precision milled to a high tolerance for a fast, smooth operation
- Includes a 4 mount 360° Swivel Base



Part No.	Jaw Width	Throat Depth	Opening	Clamping Force (Max)	Net Weight	Qty per Pallet
EBV-4	101mm (4")	66mm	122mm	1500Kgf	15.35kg	48

### EWWQR Quick Release Woodworking Vices

High quality Cast Iron vices for general woodworking applications. Available in quick release and plain screw options. A portable version is available for flexible light duty applications.



### EWWQR Quick Release Woodworking Vices

Part No.	Jaw Width	Throat Depth	Opening	Clamping Force (Max)	Net Weight	Qty per Pallet
EWWQR7	178mm (7")	90mm	202mm	1900Kgf	9.4kg	60
EWWQR9	230mm (9")	106mm	260mm	1900Kgf	15.5kg	32

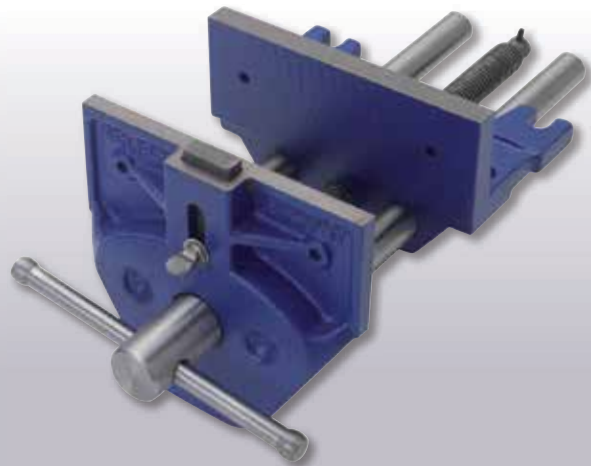
### EWWPS Plain Screw Woodworking Vices

Plain screw mechanism works through a separate unbreakable nut housed beneath the body seating, to ensure the constant alignment of the screw mechanism.

Precision machined grey cast iron body and front to ensure a smooth, parallel action. Fitted with an adjustable front stop, or dog, that gives an additional clamping facility when used with a bench stop, to provide a normal vice and a tail vice in one tool.

To increase safety, the fused tommy bar will bend before the vice can become over-stressed.

Up to 1900Kgf clamping force is achievable and is ideal for holding large pieces of wood for cutting and gluing



Part No.	Jaw Width	Throat Depth	Opening	Net Weight	Qty per Pallet
EWWPS7	178mm (7")	80mm	202mm	9.4kg	60
EWWPS9	230mm (9")	106mm	260mm	15.5kg	32

# Workholding Solutions

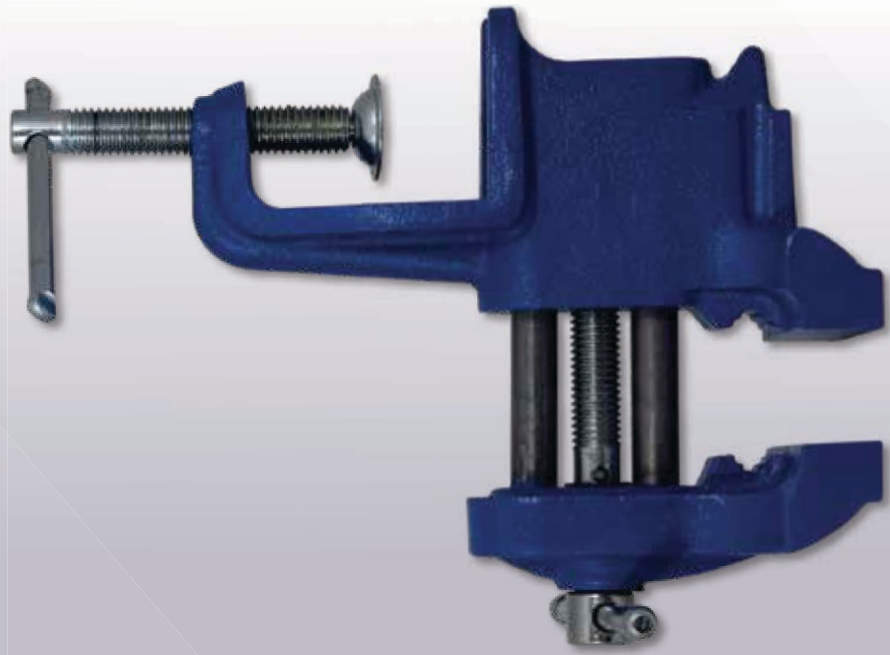
## Vices

### ETV-3 3" Table Vice

Portable vice for light duty workshop use. Up to 300kg of clamping force is achievable.

It includes permanent pipe jaws for specific pipe work and a small anvil for beating and hammering workpieces.

It features a built in clamp that allows easy fitting to a bench, table or work surface for flexible working.

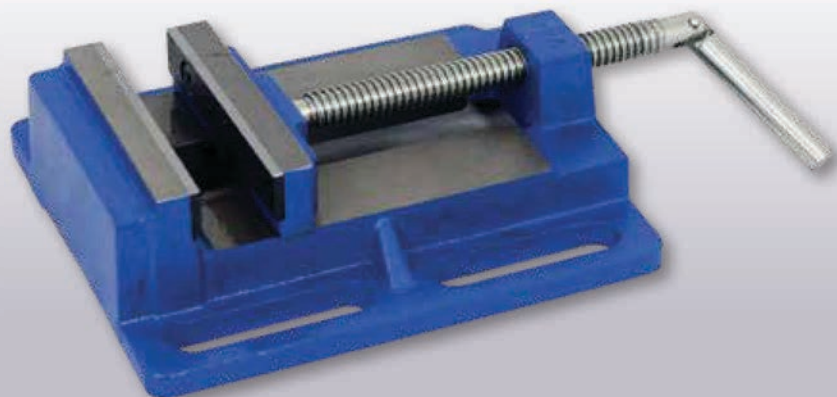


Part No.	Jaw Width	Throat Depth	Opening	Clamping Force (Max)	Net Weight	Qty per Pallet
ETV-3	75mm (3")	39mm	58mm	300kgf	1.66kg	360

### EDPV-4 4" Drill Press Vice

Designed for use with drill presses and pillar drills, ideal for an engineering workshop or tool room.

Manufactured from high quality grey cast iron for strength and durability with a slotted base for easy installation and positioning.



Part No.	Jaw Width	Throat Depth	Opening	Clamping Force (Max)	Net Weight	Qty per Pallet
EDPV-4	100mm (4")	25mm (1")	110mm (4 1/4")	600kgf	3.2kg	240

## Eclipse Clamps

Eclipse screw clamps are suitable for a wide range of medium and heavy duty wood and metal working applications. The Quick Release Lever Clamp series features a rapid clamping and releasing action.



# Workholding Solutions

## Clamps

### ELC80 and ELC120 Quick Release Lever Clamps 80mm and 120mm Throat Depth

Lightweight Aluminium frames and carbon steel bar are strong and durable and the clamps are capable of achieving up to 180kg of sustainable holding force and are ideal for gluing, positioning and fastening in wood working applications.

They feature a rapid clamping action with a quick release button that instantly releases the clamp.

The removable pads stay fixed to the clamp giving an even distribution of clamping force across the workpiece



Part No.	Clamping Capacity	Throat Depth	Pack Qty
ELC80-4	100mm (4")	80mm	10
ELC80-8	200mm (8")	80mm	10
ELC80-12	300mm (12")	80mm	10
ELC120-4*	100mm (4")	120mm	10
ELC120-8*	200mm (8")	120mm	10
ELC120-12	300mm (12")	120mm	10

### EC-SC80 80mm throat depth Screw Clamps

80mm throat depth capacity clamps, manufactured to DIN5117 standard clamps with an average clamping force of 300kg (660lbs).

The sliding head quickly sets the clamp to the required capacity, whilst the serrated grooves on the corrosion resistant nickel plated bar prevent slippage in use. The cast iron malleable heads offer maximum strength and the wooden handle provides a firm and comfortable grip.



Part No.	Clamping Capacity	Pack Qty
EC-SC80R6	150mm (6")	10
EC-SC80R8	200mm (8")	10
EC-SC80R10	250mm (10")	10
EC-SC80R12	300mm (12")	10
EC-SC80R16	400mm (16")	10
EC-SC80R24	600mm (24")	6
EC-SC80R32	800mm (32")	6
EC-SC80R40*	1000mm (40")	1
EC-SC80R48*	1220mm (48")	1

\* Made to Order. MOQ applies.

Details available on request for 32" 40" and 48"

### EC-SCR 120mm throat depth Screw Clamps

DIN5117 standard clamps with an average clamping force of 300kg (660lbs)

The sliding head quickly sets the clamp to the required capacity, whilst the serrated grooves on the corrosion resistant nickel plated bar prevent slippage in use. The cast iron malleable heads offer maximum strength and the wooden handle provides a firm and comfortable grip.

120mm (4¾) throat depth.



Part No.	Clamping Capacity	Pack Qty
EC-SCR6	150mm (6")	10
EC-SCR8	200mm (8")	10
EC-SCR10	250mm (10")	10
EC-SCR12	300mm (12")	10
EC-SCR16	400mm (16")	10
EC-SCR24	600mm (24")	6
EC-SCR32	800mm (32")	6
EC-SCR40	1000mm (40")	1
EC-SCR48*	1220mm (48")	1

\* Made to Order. MOQ applies. Details available on request.

## Eclipse One Handed Bar Clamps

A family of Heavy Duty One Handed Bar Clamps for a wide range of heavy duty to light duty wood and metal working applications.



# Workholding Solutions

## Heavy Duty OHB Clamps



★ GOOD / ★★ BETTER / ★★★ BEST

### EOHBC-HD Heavy Duty One Handed Bar Clamps and Spreader

Lightweight Aluminium frames and carbon steel bar are strong and durable and the clamps are capable of achieving up to 300 kg of sustainable holding force and are ideal for heavy duty work holding applications.

The quick release insert trigger enables the clamp to be quickly positioned and released, whilst the easy push button system allows quick change from a clamp to a spreader.

The removable pads stay fixed to the clamp giving an even distribution of clamping force across the workpiece protecting it from marking damage.



Part No.	Clamping Capacity	Min Spreading Capacity	Max Spreading Capacity	Pack Qty
EOHBC6-HD	150mm (6")	168mm (6 5/8")	355mm (13 7/8")	6
EOHBC12-HD	300mm (12")	168mm (6 5/8")	507mm (19 7/8")	6
EOHBC18-HD	450mm (18")	168mm (6 5/8")	660mm (25 7/8")	6
EOHBC24-HD	600mm (24")	168mm (6 5/8")	813mm (32")	6
EOHBC36-HD	900mm (36")	168mm (6 5/8")	1117mm (43 7/8")	6





# Workholding Solutions

## Clamps

### EOHBC Original Series One Handed Bar Clamps and Spreaders

Average clamping force of 150kg. Quick release trigger enables the clamp to be quickly positioned and released, whilst the jaw release clip mechanism allows the jaw to be removed and re-attached to the other end of the bar, thus converting the clamp into a spreader.

The carbon steel bar and reinforced nylon body make it both tough and durable, whilst the ergonomically designed, soft feel pistol grip handle fits easily into the hand.

In addition, the toe-in feature means that, when fully closed, the jaws only meet at the top, thus providing an even clamping force across the whole depth of the workpiece. Non-marking pads firmly grip and protect the workpiece.



Throat  
Depth 85mm  
(3 3/8")

Part No.	Clamping Capacity	Min Spreading Capacity	Max Spreading Capacity	Pack Qty
EOHBC6	150mm (6")	168mm (6 5/8")	340mm (13 3/8")	20
EOHBC6X2*	150mm (6")	168mm (6 5/8")	340mm (13 3/8")	5
EOHBC12	300mm (12")	168mm (6 5/8")	495mm (19 1/2")	12
EOHBC18	450mm (18")	168mm (6 5/8")	645mm (25 3/8")	12
EOHBC24	600mm (24")	168mm (6 5/8")	800mm (31 1/2")	12
EOHBC36	900mm (36")	168mm (6 5/8")	1105mm (43 1/2")	12

\* 150mm (6") in pairs in a display box

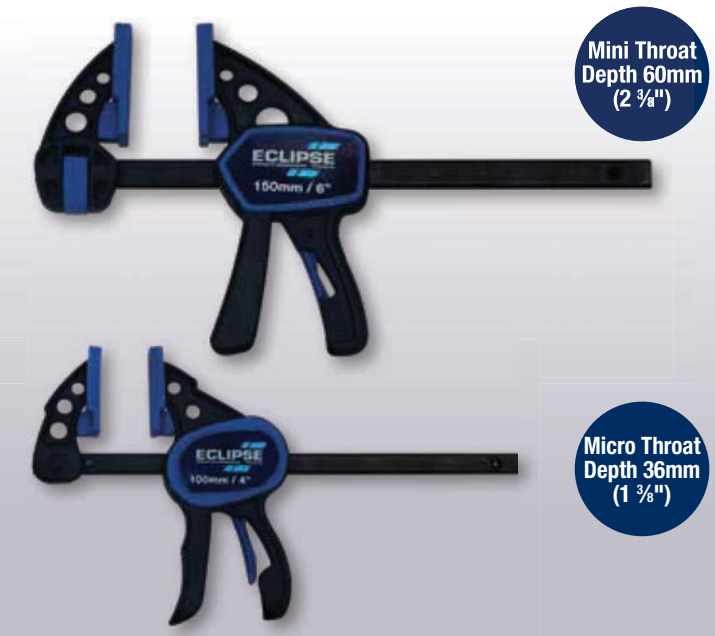
### EOHBC-MINI and EOHBC - MICRO Mini and Micro One handed bar clamps

Strong plastic construction and carbon steel bar are strong and durable and allow the MINI clamp to achieve up to 75 kg and the MICRO clamp to achieve up to 25kg clamping force.

They are ideal for small wood working projects, working in confined spaces and delicate work requiring light pressure.

The MINI clamp features an easy push button system and allows a quick change from a clamp to a spreader.

The quick release insert trigger enables the clamps to be quickly positioned and released and the removable pads stay fixed to the clamp giving an even distribution of clamping force across the workpiece protecting it from marking damage.



Mini Throat  
Depth 60mm  
(2 3/8")

Micro Throat  
Depth 36mm  
(1 3/8")

Part No.	Clamping Capacity	Min Spreading Capacity	Max Spreading Capacity	Pack Qty
EOHBC6-MINI	150mm (6")	123mm(4 3/4")	275mm(10 3/4")	16
EOHBC12-MINI	300mm (12")	123mm(4 3/4")	427mm(16 3/4")	16
EOHBC4-MICRO	100mm (4")	N/A	N/A	20

## Eclipse Heavy Duty Parallel Jaw Woodworking Clamps

Metal reinforced plastic housing for maximum strength capable of achieving up to 600Kgf of clamping force. An anti-slip system on the high quality extra strong 29 x 19mm profiled steel bar prevents the clamp from slipping in use. The large parallel clamping surface with protective pads ensures even distribution of force and protection of delicate workpieces and the clamp may be easily converted to a spreader without the need for other tools. An ergonomic handle ensures comfortable use. Available in six sizes: 12", 24", 32", 40", 50" and 60" clamping capacities and 95mm throat depth.



Part No.	Clamping Capacity	Minimum Spreading Capacity	Maximum Spreading Capacity
EC-PJC12*	300mm (12")	300mm (12")	490mm (19 5/8")
EC-PJC24*	600mm (24")	300mm (12")	790mm (31 5/8")
EC-PJC32*	800mm (32")	300mm (12")	985mm (39 3/8")
EC-PJC40*	1000mm (40")	300mm (12")	1200mm (48")
EC-PJC48*	1200mm (48")	300mm (12")	1400mm (56")
EC-PJC60*	1500mm (60")	300mm (12")	1680mm (67 1/8")



# Workholding Solutions

## Clamps

### Eclipse Heavy Duty Metalworking Clamp

**Heavy duty metal working clamps capable of up to 1200Kgf clamping force.**

High quality steel bar 30mm wide x 15mm thick ensures optimum strength. A hex design screw end reinforces clamping.

The heat-treated circular pressure clamping plate features a full ball type support which may be tilted 35degrees to withstand heavy duty working and giving the ability to clamp awkward shaped work pieces.

Available in five sizes: 10", 12", 16", 20" and 24" clamping capabilities and 140mm throat depth.



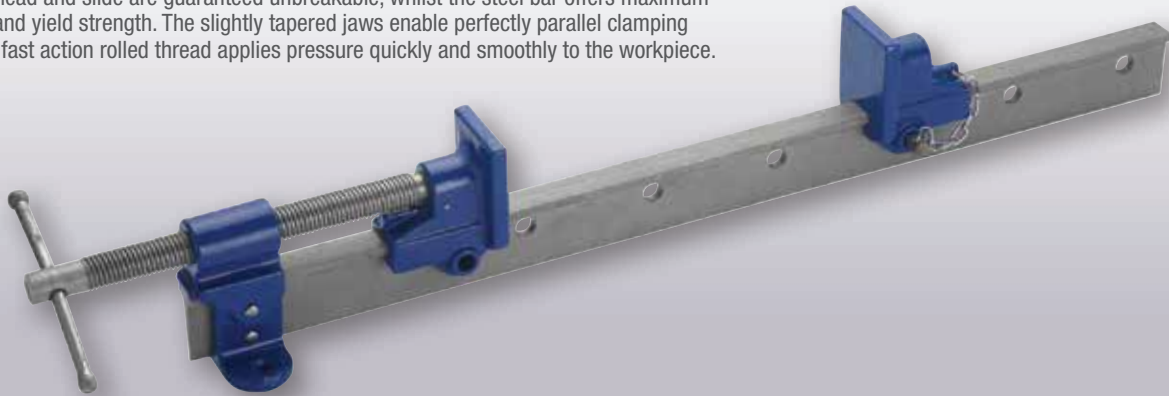
Part No.	Clamping Capacity	Pack Qty
EC-GS10*	250mm (10")	5
EC-GS12*	300mm (12")	5
EC-GS16*	400mm (16")	5
EC-GS20*	500mm (20")	5
EC-GS24*	600mm (24")	5
EC-GSCP*	Spare Clamping Pad	



## ETBR T-Bar Clamps

**Average clamping force of 1000kg (2200lbs)**

The drilled feet in the fixed head enable the clamp to be mounted to a workbench. The ductile head and slide are guaranteed unbreakable, whilst the steel bar offers maximum tensile and yield strength. The slightly tapered jaws enable perfectly parallel clamping and the fast action rolled thread applies pressure quickly and smoothly to the workpiece.



Part No.	Clamping Capacity	Bar Length	Pack Qty
ETBR42	1070mm (42")	1220mm (48")	4
ETBR48	1220mm (48")	1370mm (54")	4
ETBR54	1370mm (54")	1525mm (60")	4
ETBR66	1680mm (66")	1830mm (72")	4
ETBR78	1980mm (78")	2135mm (84")	4
ETBR-TSPC*	Spare tail slide, peg and chain		1

\* Made to Order. MOQ applies. Details available on request.

## ESC Sash Clamps & Clamp Heads

Sash clamps have an average clamping force of 500kg (1100lbs). The ductile head and slide are guaranteed unbreakable, whilst the steel bar offers maximum tensile and yield strength. The slightly tapered jaws enable perfectly parallel clamping and the fast action rolled thread applies pressure quickly and smoothly to the workpiece.



Part No.	Clamping Capacity	Bar Length	Pack Qty
ESC24	600mm (24")	760mm (30")	6
ESC30	760mm (30")	915mm (36")	6
ESC36	915mm (36")	1070mm (42")	6
ESC42	1070mm (42")	1220mm (48")	6
ESC48	1220mm (48")	1370mm (54")	6
ESC54	1370mm (54")	1525mm (60")	6
ESC66	1680mm (66")	1830mm (72")	6
ESC-TSPC*	Spare tail slide, peg and chain		1

\* Made to Order. MOQ applies. Details available on request.

# Workholding Solutions

## Clamps

### E20 Heavy Duty G-Clamps

Average clamping force of 300 – 800kg (660 – 1760lbs). Guaranteed unbreakable malleable iron frame with a fast action twin start rolled acme thread. The steel swivel shoe applies an even pressure, even on angled surfaces, whilst the tommy bar will bend before the frame can become over-stressed.



Part No.	Clamping Capacity	Frame Proof Loads	Pack Qty
E20-3	75mm (3")	1000lbs (455kg)	6
E20-4	100mm (4")	1200lbs (545kg)	6
E20-6	150mm (6")	1400lbs (636kg)	6
E20-8	200mm (8")	1700lbs (773kg)	2
E20-10	250mm (10")	1700lbs (773kg)	2
E20-12	300mm (12")	2500lbs (1136kg)	2



## Specialist Cutting Range

Eclipse features a wide range of specialist cutters and snips for the manual cutting of bolts, wire, cables, sheet metals, copper, silver and gold.



# Cutting Bolt and Wire Cutters

High tensile Bolt Cutters, available in a range of sizes, with a choice of tubular or solid forged handles.

## Bolt Cutters - High Tensile, Tubular Handles

High tensile - for cutting hard materials up to 50HRC. Centre cut, arm adjusted bolt cutters with lightweight tubular handles that do not compromise strength – every pound of force applied is amplified to produce 80lbs (36kg) of force between the jaws. To maximise safety the built in stops will yield rather than break, whilst the drop forged jaws are machined to precise specifications for a resilient body and rigid cutting edge.

Part No.	Total Length	Max Cutting Capacity	Pack Qty
ETBC14	355mm (14")	5mm ( $\frac{3}{16}$ "	20
ETBC18	460mm (18")	6.4mm ( $\frac{1}{4}$ "	10
ETBC24	610mm (24")	7.9mm ( $\frac{5}{16}$ "	8
ETBC30	762mm (30")	9.5mm ( $\frac{3}{8}$ "	5
ETBC36	915mm (36")	11.1mm ( $\frac{7}{16}$ "	4



## Bolt Cutters - High Tensile, Forged Handles

High tensile - for cutting hard materials up to 50HRC. Centre cut, arm adjusted bolt cutters with solid forged handles for maximum strength - every pound of force applied is amplified to produce 80lbs (36kg) of force between the jaws. To maximise safety the built in stops will yield rather than break, whilst the drop forged jaws are machined to precise specifications for a resilient body and rigid cutting edge.

### Bolt Cutters - High Tensile, Forged Handles

Part No.	Total Length	Max Cutting Capacity	Pack Qty
EFBC14	355mm (14")	5mm ( $\frac{3}{16}$ "	16
EFBC18	460mm (18")	6.4mm ( $\frac{1}{4}$ "	8
EFBC24	610mm (24")	7.9mm ( $\frac{5}{16}$ "	6
EFBC30	762mm (30")	9.5mm ( $\frac{3}{8}$ "	4
EFBC36	915mm (36")	11.1mm ( $\frac{7}{16}$ "	3
EFBC42	1070mm (42")	13mm ( $\frac{1}{2}$ "	2

### Spare Jaw and Strap Set

Part No.	Description
EFBC14-RH	Spare Jaw and Strap Set
EFBC18-RH	Spare Jaw and Strap Set
EFBC24-RH	Spare Jaw and Strap Set
EFBC30-RH	Spare Jaw and Strap Set
EFBC36-RH	Spare Jaw and Strap Set
EFBC42-RH	Spare Jaw and Strap Set





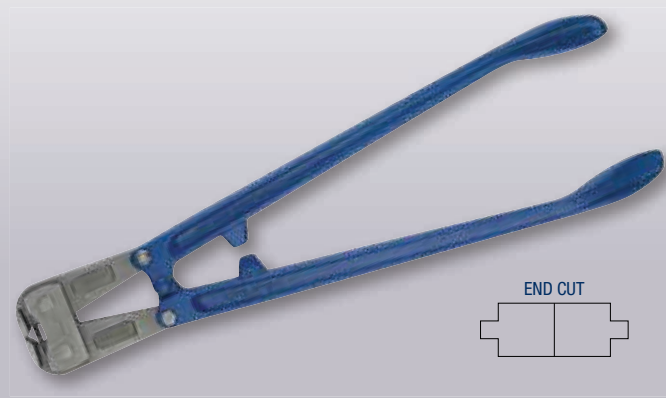


# Cutting Bolt and Wire Cutters

Specialist cutters for shearing bolt heads and cutting wire, rope and cable.

## EBC-EC24 End Cut Bolt Cutter - 24"/600mm

Pincer movement makes the bolt cutter ideal for cutting in restricted areas or where a side cut is difficult, eg when cutting off bolt heads. Jaws are drop forged and machined to precise specifications for a resilient body and rigid cutting edge. Handles are solid forged and incorporate safety stops that will yield rather than break.



Part No.	Total Length	Max Cutting Capacity	Pack Qty
EBC-EC24	600mm (24")	7.9mm (5/16")	4

## ECC16 Cable Cutters - 24"/600mm

For cutting 16mm wire rope and up to 21mm armoured cable. The lightweight tubular steel handles reduce user fatigue during prolonged use, whilst the rubber hand grips reduce the risk of slippage. The jaws have hardened cutting edges for easy cutting.



Part No.	Total Length	Max Cutting Capacity	Pack Qty
ECC16	600mm (24")	16mm wire rope and up to 21mm armoured cable	4

## EWC8 Wire & Rope Cutter - 8"/200mm

Suitable for a multitude of agricultural, garden, automotive and marine cutting tasks. Angled and hardened blades ensure a clean cut, whilst the spring loaded head gives a fast, smooth cutting action. Rubber handles reduce the risk of slippage.

Material	Recommended Capacity
Mild steel strand	6.5mm
High tensile steel rope (180kg/mm <sup>2</sup> )	5.0mm
Soft steel wire (34kg/mm <sup>2</sup> )	5.0mm
Copper/aluminium rod	5.0mm
Steel rod (66kg/mm <sup>2</sup> )	4.0mm
Spring wire (hardened and tempered) (180kg/mm <sup>2</sup> )	2.5mm
Electric cable (not armoured)	6.5mm

Part No.	Total Length	Pack Qty
EWC8	200mm (8")	5



Cuts up to 1.2mm cold rolled steel and 0.7mm stainless steel. Drop forged alloy steel blades give a longer cutting life, whilst the spring loaded handles ensure a fast, smooth cutting action.

## EAS-SL Aviation Snips

Long cut/straight cut and wide curves Aviation Snips



Part No.	Cutting Capacity (Cold Rolled Steel)	Cutting Capacity (Stainless Steel)	Pack Qty
EAS-SL	1.22mm	0.7mm	6

## EAS-S Aviation Snips

Straight and wide curves Aviation Snips



Part No.	Cutting Capacity (Cold Rolled Steel)	Cutting Capacity (Stainless Steel)	Pack Qty
EAS-S	1.22mm	0.7mm	6

## EAS-R Aviation Snips

Right and straight cut Aviation Snips



Part No.	Cutting Capacity (Cold Rolled Steel)	Cutting Capacity (Stainless Steel)	Pack Qty
EAS-R	1.22mm	0.7mm	6

## EAS-L Aviation Snips

Left and straight cut Aviation Snips



Part No.	Cutting Capacity (Cold Rolled Steel)	Cutting Capacity (Stainless Steel)	Pack Qty
EAS-L	1.22mm	0.7mm	6

# Cutting Tin Snips

New to the Eclipse Cutting tools range are Tin Snips, designed for making straight cuts through sheet metal and other thin yet tough materials.



## ECTS7 - 7" Tin Snips

- Tool steel blades for lasting sharpness
- Drop forged for maximised strength
- Induction hardened cutting edges

**NEW**



Part No.	Description	Cutting Capacity (Cold Rolled Steel)	Cutting Capacity (Stainless Steel)	Pack Qty
ECTS7	7" Tin Snips	0.53mm/24 Gauge	0.36mm/28 Gauge	6

## ECTS10 - 10" Tin Snips

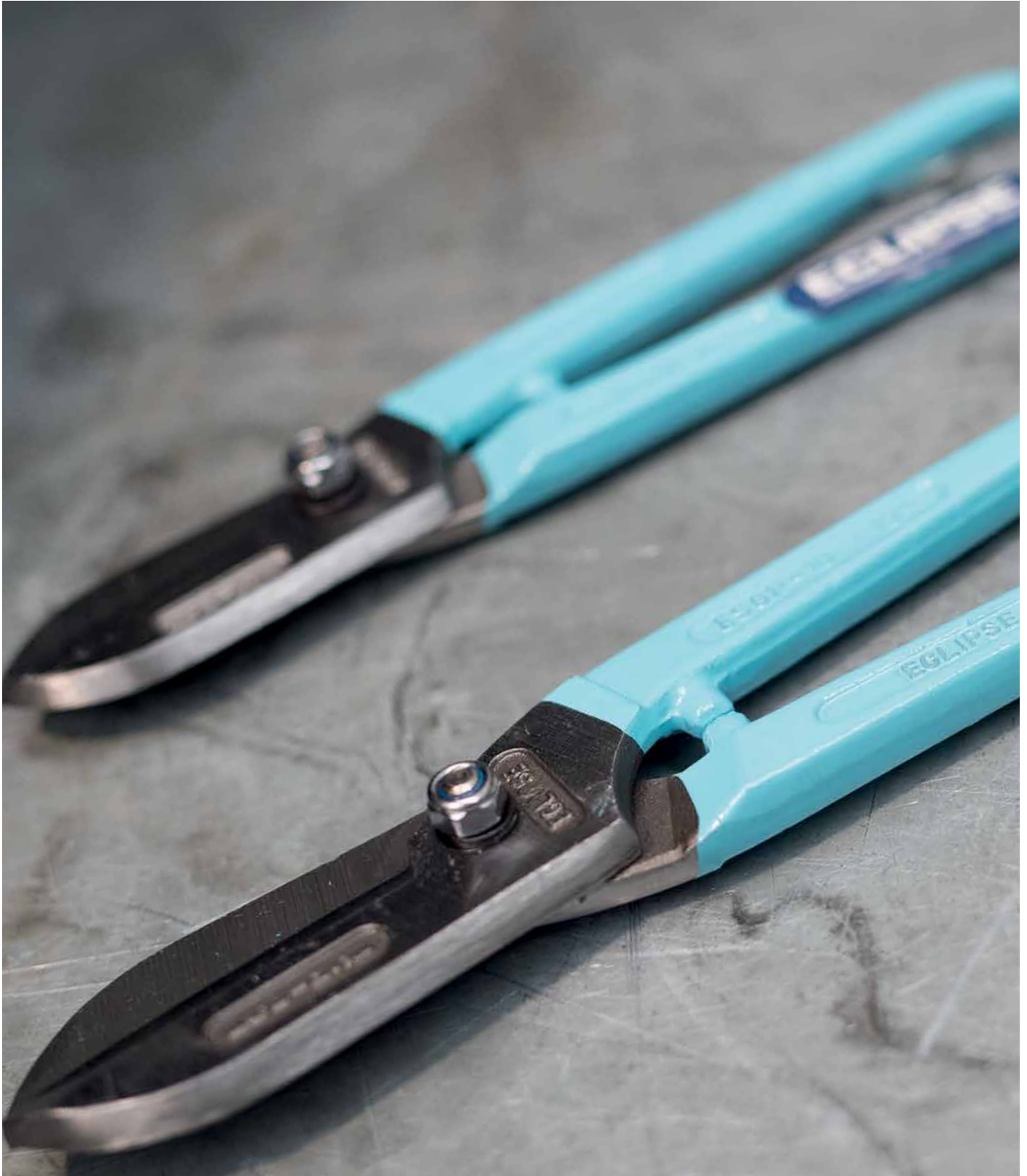
- Tool steel blades for lasting sharpness
- Drop forged for maximised strength
- Induction hardened cutting edges

**NEW**



Part No.	Description	Cutting Capacity (Cold Rolled Steel)	Cutting Capacity (Stainless Steel)	Pack Qty
ECTS10	10" Tin Snips	0.78mm/22 Gauge	0.46mm/26 Gauge	6

Resharpenable General Purpose Snips, precision hollow ground for easy cutting of sheet metal.  
Jewellers Snips suitable for cutting copper, silver and gold.



# Cutting General Purpose Snips

## ESGP General Purpose Snips

For cutting sheet metal. The precision hollow ground blades reduce friction for an easy cutting action and, since they are also induction hardened and tempered, they can be easily re-sharpened. The spring loaded nut allows for easy adjustment to increase the working life, whilst the high quality steel drop forged handles offer maximum strength.

Part No.	Total Length	Cutting Capacity Mild Steel up to 18g (Thickness in mm)	Cutting Capacity Stainless Steel up to 23g (Thickness in mm)	Pack Qty
ESGP-8	200mm (8")	0.53	0.36	6
ESGP-10	255mm (10")	0.78	0.46	6
ESGP-12	300mm (12")	0.94	0.78	6
ESGP-14	350mm (14")	1.24	0.90	6





CELEBRATING  
OVER  
260  
YEARS  
OF EXPERIENCE

CONTACT  
US!

## GLOBAL CUSTOMER SERVICE CENTRE

Neill Tools Ltd.  
A Spear & Jackson Group Company  
Atlas Way, Atlas North  
Sheffield S4 7QQ, England

Tel: +44 (0)1142 814 242  
Fax: +44 (0)1142 814252  
Email: sales@eclipse-tools.com (Non-UK Markets)  
Email: sales@spear-and-jackson.com



WORLD  
LAND  
TRUST™

www.carbonbalancedprint.com  
CBP2225



Printed on  
recyclable material

Follow us on:



FIND OUT MORE AT [www.eclipse-tools.co.uk](http://www.eclipse-tools.co.uk)

ECLCAT1122



\*PRICES ARE VALID WHILE STOCKS LAST. \*EXCLUSIVE TO MATUS ACCOUNT HOLDERS. \*PROMO IS EXCLUSIVE OF VAT\* TERMS AND CONDITIONS APPLY. \*E&OE



### JOHANNESBURG (HO)

Number 1 Randport  
Industrial Park, 1, Suzuka Road,  
Gosforth Park, Germiston  
T 011 681 9440 (Admin)  
T 011 681 9100 (Sales)  
E info@matus.co.za  
W www.matus.co.za

### CAPE TOWN

11 Grenville Ave,  
Epping Industria 1,  
Cape Town  
T 021 486 2200  
E info@matus.co.za

### DURBAN

Physical Address  
Unit B, Campbell Street,  
Northfield Business Park  
Glen Anil, 4051  
T 031 580 3400  
E info@matus.co.za

### PORT ELIZABETH

Physical Address  
118 Burman Road,  
Deal Party, Port Elizabeth  
T 041 486 1345/59  
E info@matus.co.za

**MATUS**  
Hard Working Brands

